



SAM4S Receipt Printer

JPOS Driver

Linux User Manual

Contents

Table of Contents

Table of Contents.....	2
1. Introduction	3
2. Overview	3
3. Prerequisite.....	3
4. Extracting files using GUI	4
5. Installation Wizard	5
6. Add / Delete a JPOS Device.....	7
7. Sample Application Code	14
8. Uninstallation Procedure	15

1. Introduction

The purpose of this document is to describe how to install and use the SAM4S Receipt printer JPOS driver for Linux, in detail. The document provides information on installation and using of SAM4S Receipt Printer JPOS Set driver on Ubuntu 12.04, 12.10, 13.10 (32 bit and 64 bit) operating systems.

2. Overview

SAM4S Receipt printer JPOS driver for Linux can support thermal receipt printing of text, image and bar-code along with Cash drawer functionality.

3. Prerequisite

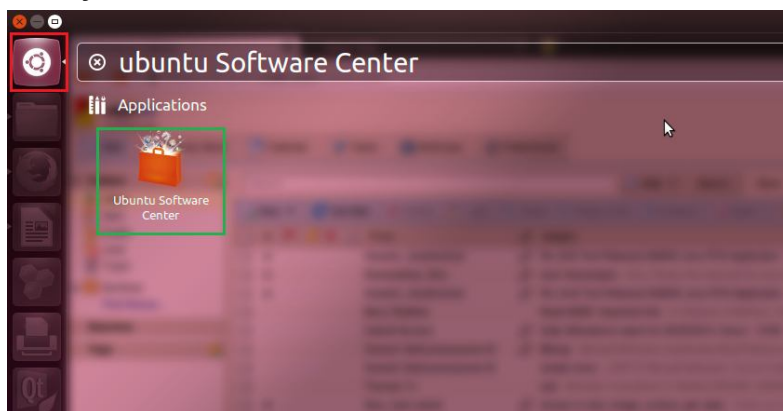
SAM4S Receipt printer JPOS driver with Linux support and has been tested on the following distributions of Linux:

- ⇒ Ubuntu 12.04, 12.10, 13.10 32 bit
- ⇒ Ubuntu 12.04, 12.10, 13.10 64 bit

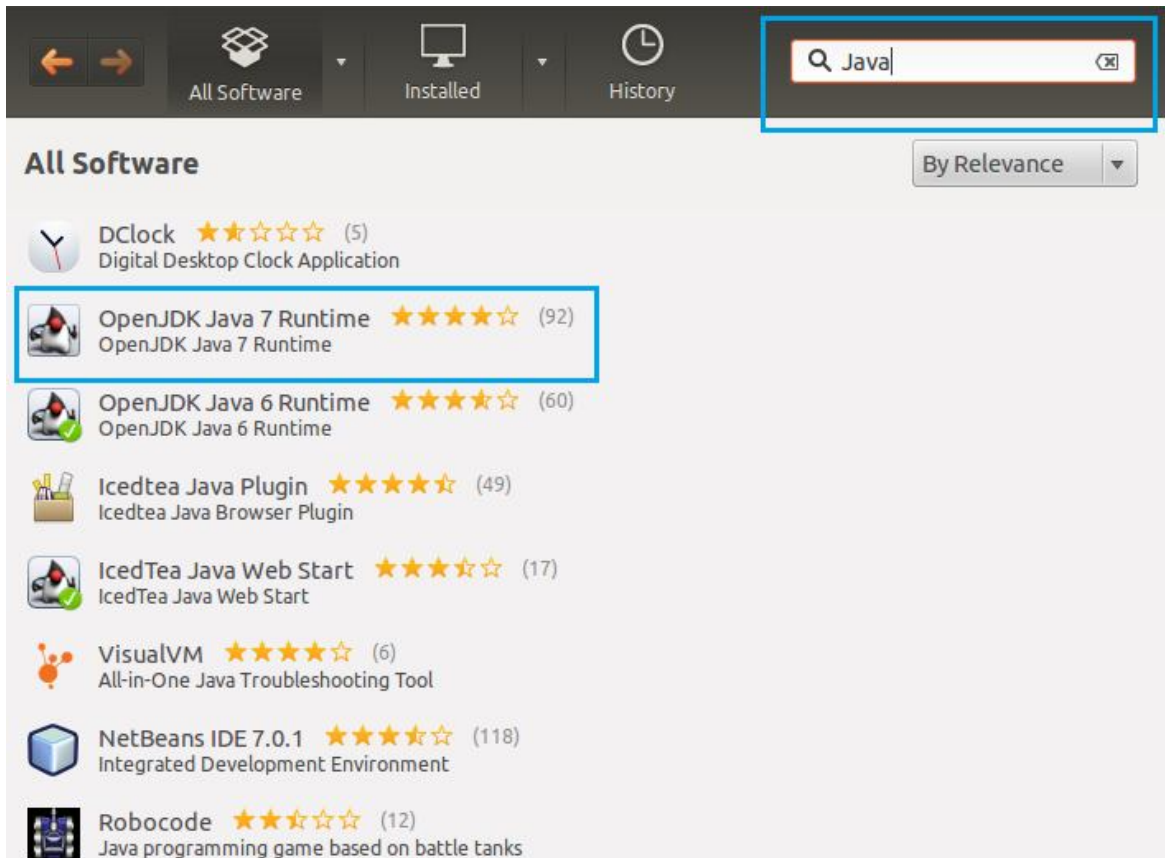
Also requires JDK 1.7 & JRE 7 needs to be pre-installed

1. Steps to install JRE through GUI

- ⇒ Click on the **Ubuntu Wubi** [Marked as red in the image below] icon which is on the top right of the menu and type in **Ubuntu Software Center** and click **Ubuntu Software Center** Link from the dashboard.



- ⇒ In the opened **Ubuntu Software Center** enter **Java** in search box and select **OpenJDK Java 7 Runtime** from the list as shown in the following screen to install the OpenJDK Java 7 Runtime.



2. Steps to install JRE through Terminal

- ⇒ Launch the Ubuntu **Terminal**
- ⇒ Type the following command to install the OpenJDK Java 7 Runtime.
- ```
sudo apt-get install openjdk-7-jre
```

## 4. Extracting files using GUI

To install this SAM4S Receipt Printer JPOS Driver version xx.xx.xx.xx for Linux by means of GUI, the user needs to be a root user.

- ⇒ Click on the **SAM4S\_Receipt\_Printer\_JPOS\_Driver-x.x.x.x-Linux-x86\_64-Install.tar.gz** or **SAM4S\_Receipt\_Printer\_JPOS\_Driver-x.x.x.x-Linux-x86-Install-Install.tar.gz** archive file to untar 64 bit or 32 bit driver installer respectively to a desired directory location.  
[In the fire fox web browser, the setup will be downloaded inside the download folder. Right click → Open Containing folder → Right click → Open with Archive Manager → Right click Extract or click Extract → select the desired location → Click Extract]
- ⇒ Switch to the directory location where the setup has been un tared and double click on the binary to install the driver.

## 5. Installation Wizard

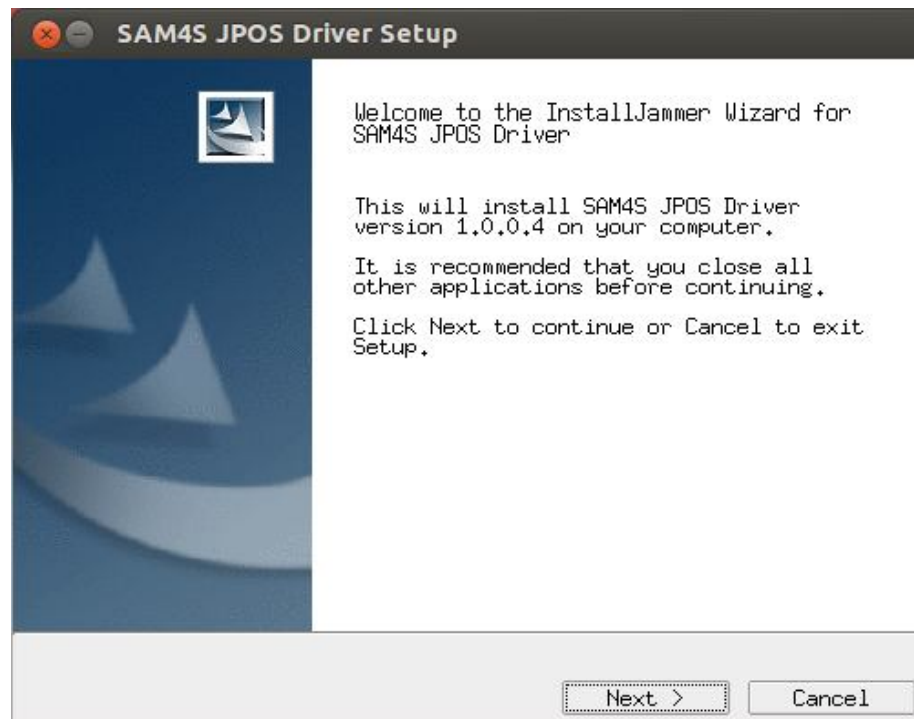
### Prerequisite:

The installation can be performed only in Administrator mode. Type the Administrator password [sudo user] when prompted.

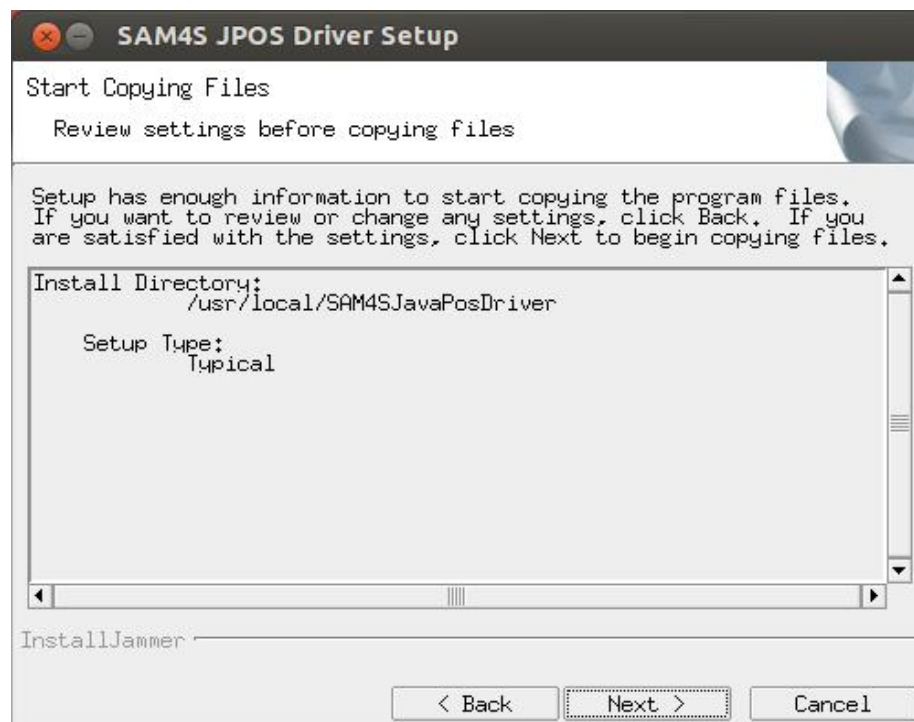
- ⇒ Double click on the un-tared binary to initiate the installation of the driver.
- ⇒ To install the driver, click **Yes** in the screen displayed after the user double clicks the driver setup. On clicking **Yes** the **SAM4S Receipt Printer JPOS Driver Setup** wizard's **Welcome screen** for installation appears. Click **No** on the same screen to cancel the installation.



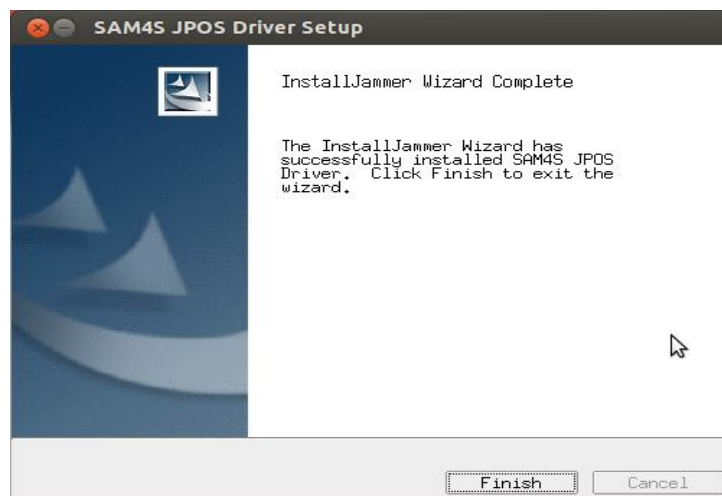
- ⇒ In the SAM4S Receipt Printer JOS driver **Welcome Page** shown below. Click on **Next** to continue with the installation or, Click on **Cancel** to terminate installation.



⇒ Click **Next** on the Welcome screen to navigate to Start Copying Files screen as shown below or, Click on **Cancel** to terminate installation.



- ⇒ The next screen will display the progress of the installation process. After the installation is complete the **Next** button will be enabled.
- ⇒ Now all files will be copied in to the directory
  1. `/usr/local/SAM4SJavaPosDriver`
- ⇒ After copying is complete, the final Install Jammer Wizard finish page will show the message **successfully installed SAM4S Receipt Printer JPOS Driver**.

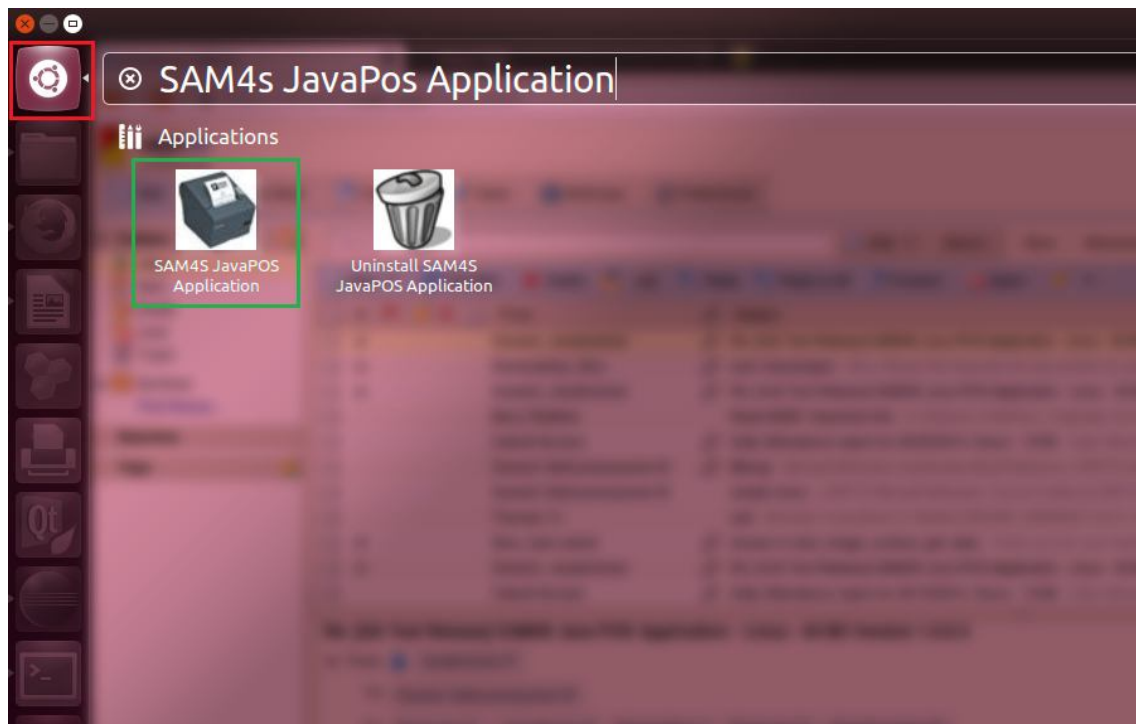


- ⇒ Click on **Finish** button in the Install Jammer Finish page to complete the installation and exit the Installer.

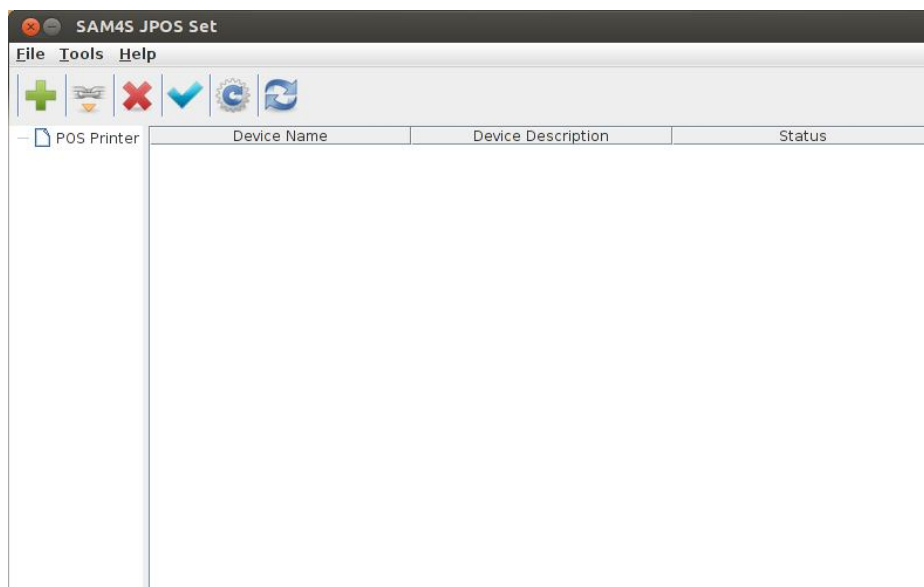
## 6. Add / Delete a JPOS Device

### 3. Add a JPOS Device

- ⇒ Launch the JPOS Set application for SAM4S Receipt Printers by Click on the **Ubuntu Wubi** **[Marked as red in the image below]** icon which is on the top right of the menu and type in **SAM4S JavaPOS Application** and click **SAM4S JavaPOS Application** link from the dashboard.

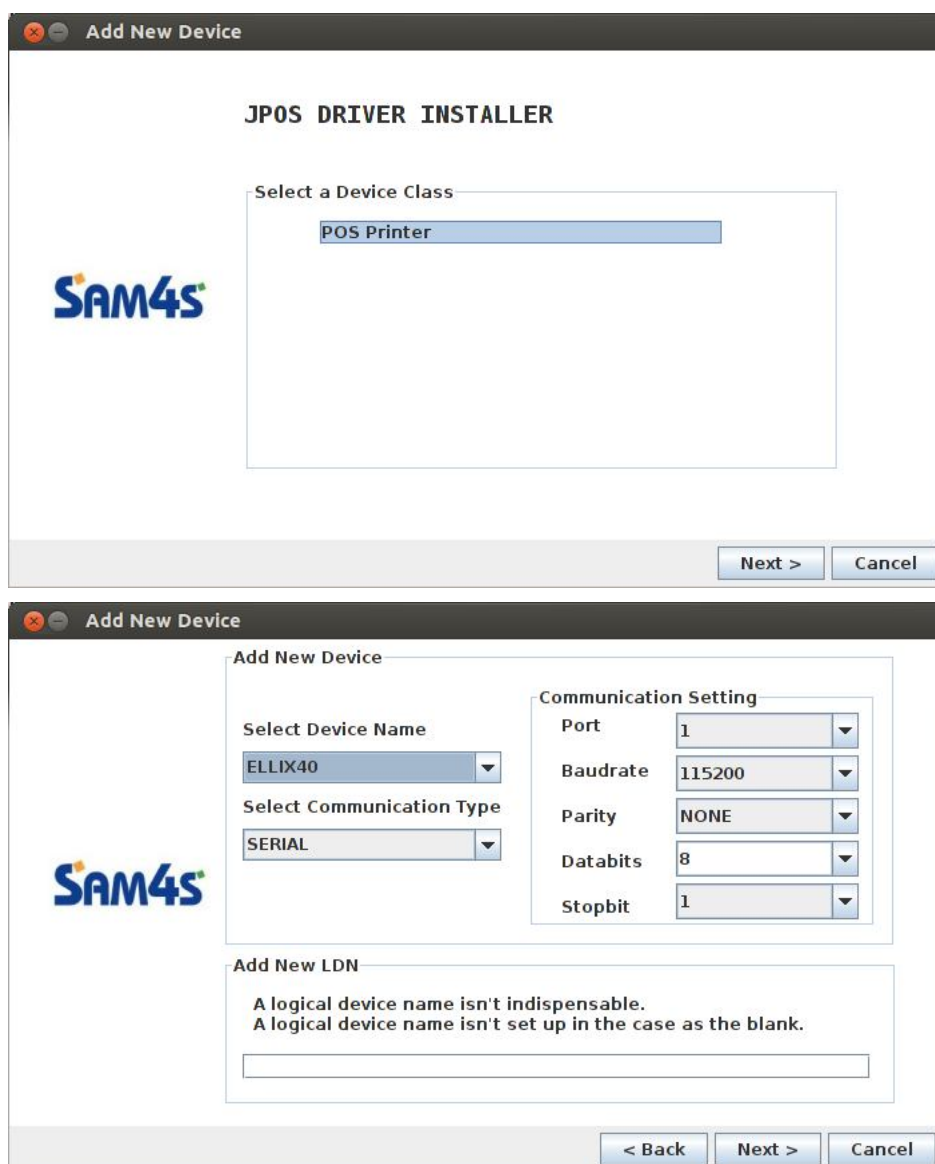


⇒ Click the file menu and select the **Add Device** option from the following screen to add the new JPOS device.



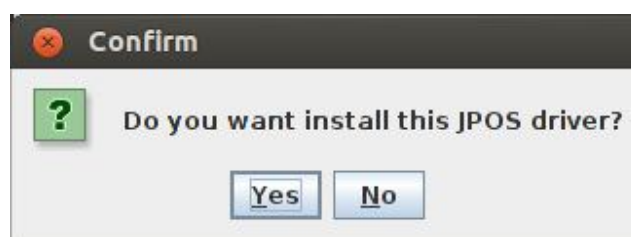
⇒ Then select the POS Device option then click **Next** button, Next screen will show the available communication type and model names of the printer.



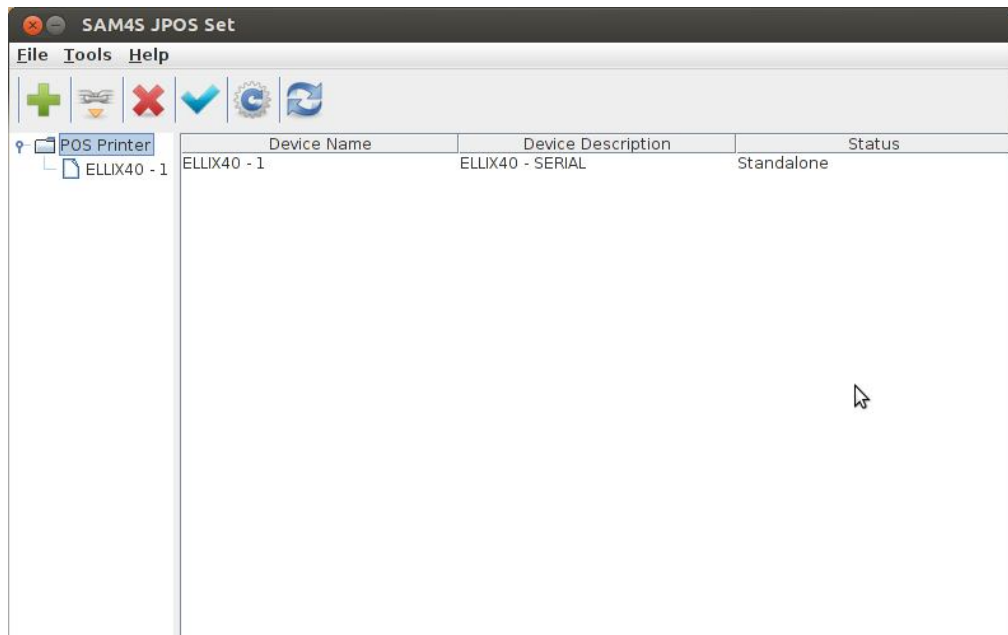


⇒ Then select the appropriate communication type and their communication settings as well as logical device name to the POS device to add as shown in the above screen.

⇒ Then it will ask the confirmation; click **Yes** to add the install the JPOS driver for the device.

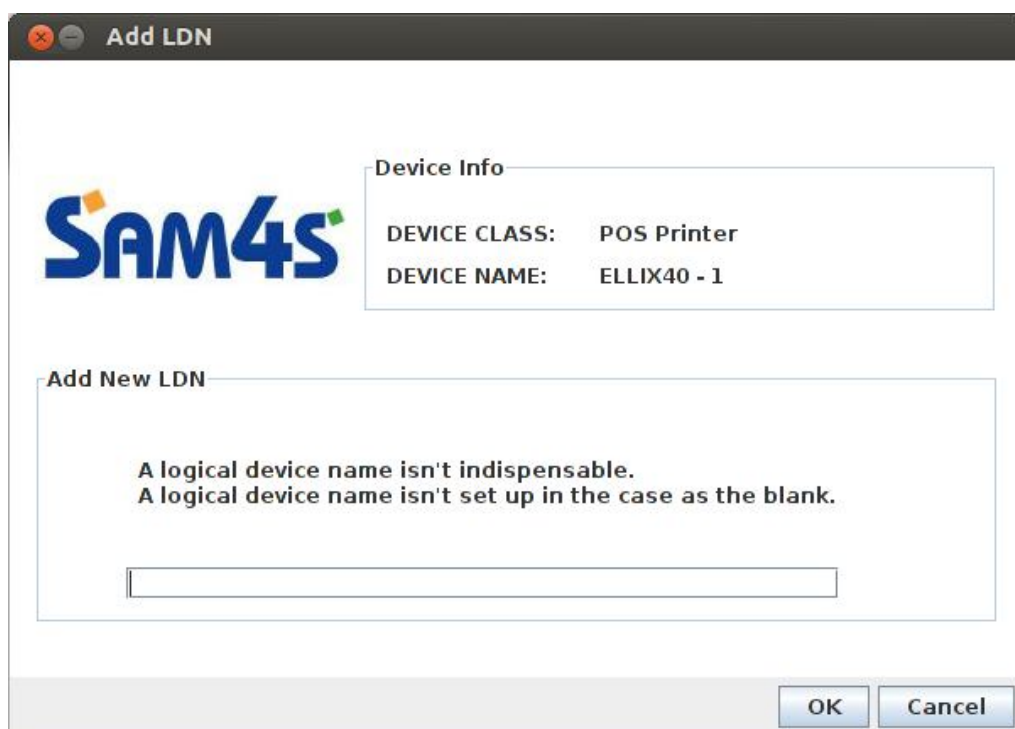


⇒ Then following screen will show the installed POS device and their corresponding LDN



#### 4. Add LDN

⇒ To Add LDN, select the JPOS device from the device **Tree** then click the **File** menu and select **Add LDN**, the following screen will appear



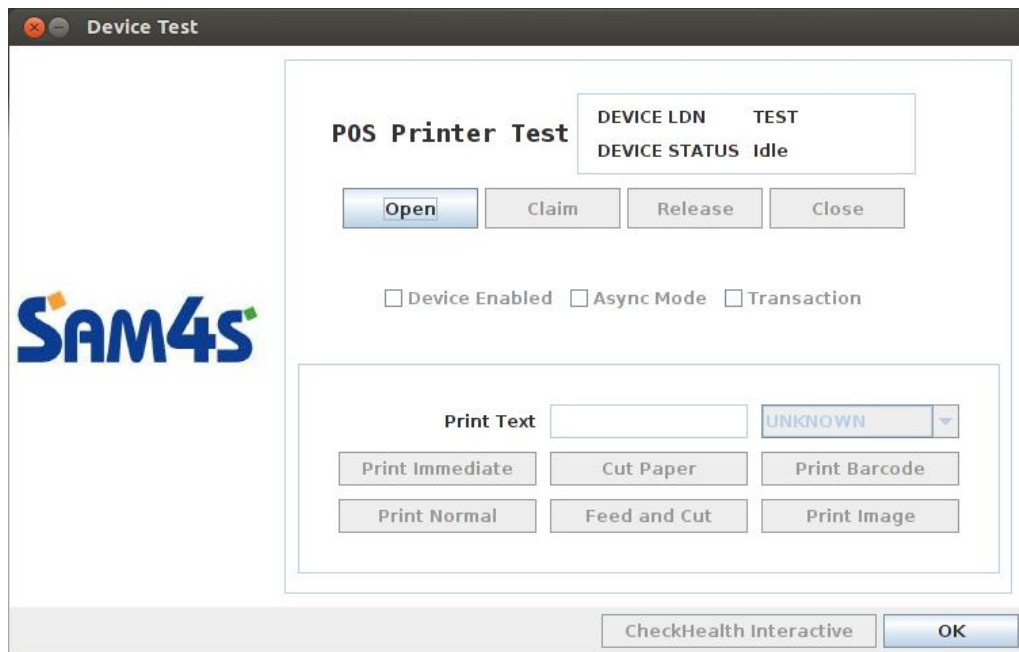
⇒ Enter the **Logical Device Name** not more than 15 characters and click **OK**.

## 5. Delete LDN

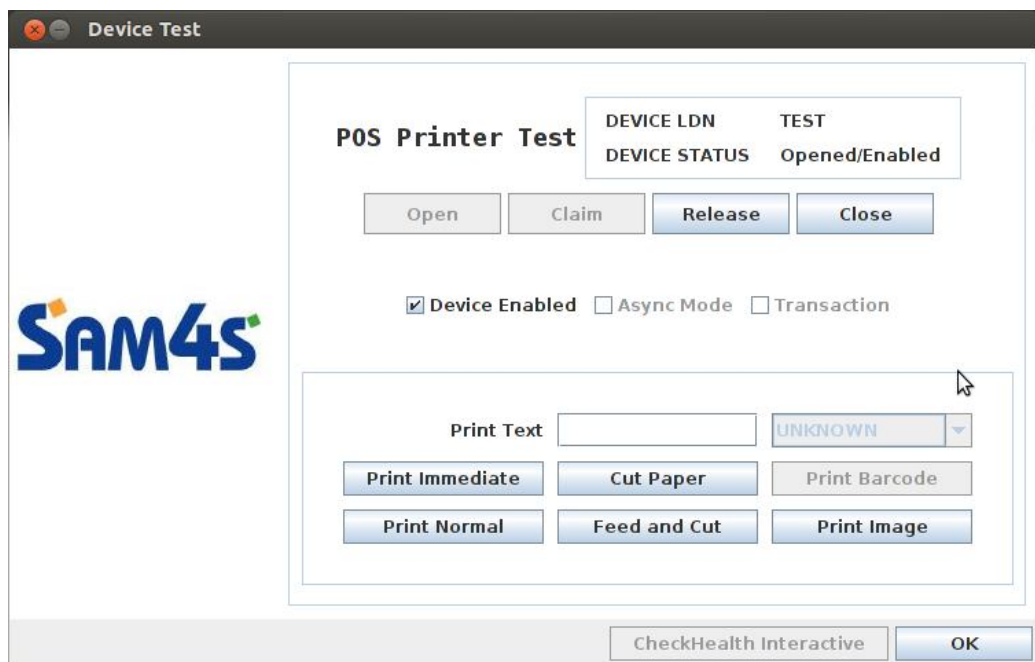
⇒ To delete any LDN, select the LDN either in **Tree or Grid** view and click either **Delete** icon from the toolbar or select **Delete LDN** from the File menu.

## 6. Test JPOS Device

⇒ In order to test the POS device LDN, click the **Tools** menu and select **the Device Test** option. Then following screen will appear.



⇒ In the **Device Test** window first click the **Open** then **Claim** button. The following screen will appears.



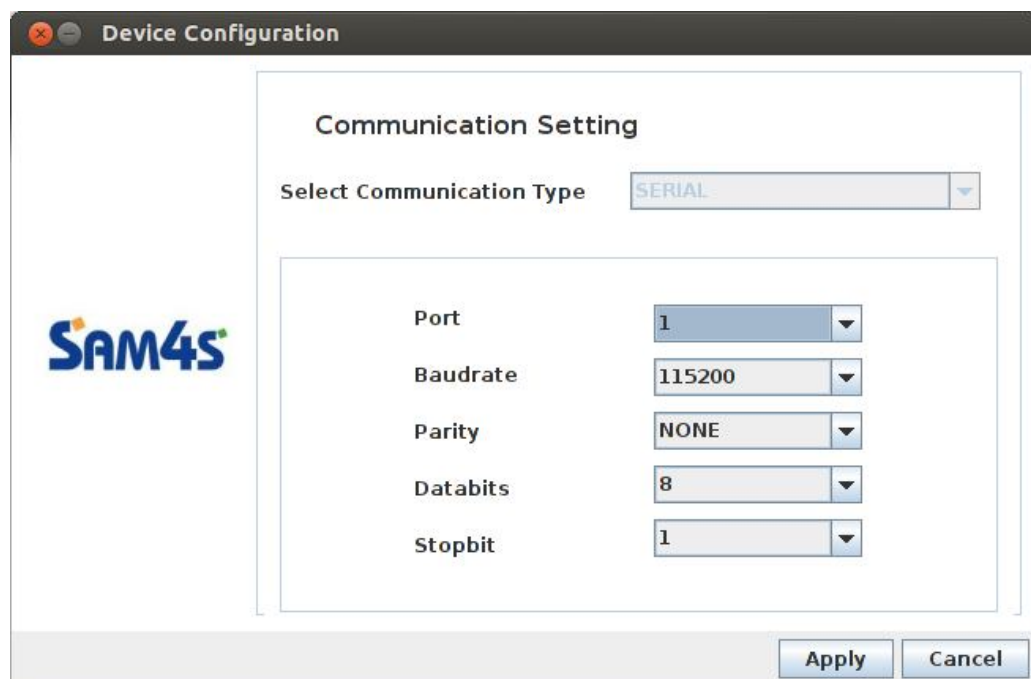
⇒ Select the **Device Enabled** check box in order to test the device as shown in the above screen

- ⇒ To print text immediate or normal, enter the text in **Print Text** text box and click either **Print Immediate** or **Print Normal** respectively.
- ⇒ To print image, click the **Print Image** button and select any bmp file.
- ⇒ To test cut paper option, click **Cut Paper** button.
- ⇒ To test feed and cut option, click **Feed and Cut** button.

## 7. Device Configuration

We can able to change the device configuration of the selected LDN.

- ⇒ To edit the configuration of the LDN, select any **LDN** and then click the **Tools** menu and select the **Device configuration** option, then following screen will appear.



- ⇒ Make necessary changes to the communication settings and click **Apply** button to save the changes.

## 8. Delete a JPOS device

- ⇒ To delete a JPOS device select the device either in **Tree or Grid** view and click either **Delete** icon from the toolbar or select **Delete Device** from the File menu.

## 7. Sample Application Code

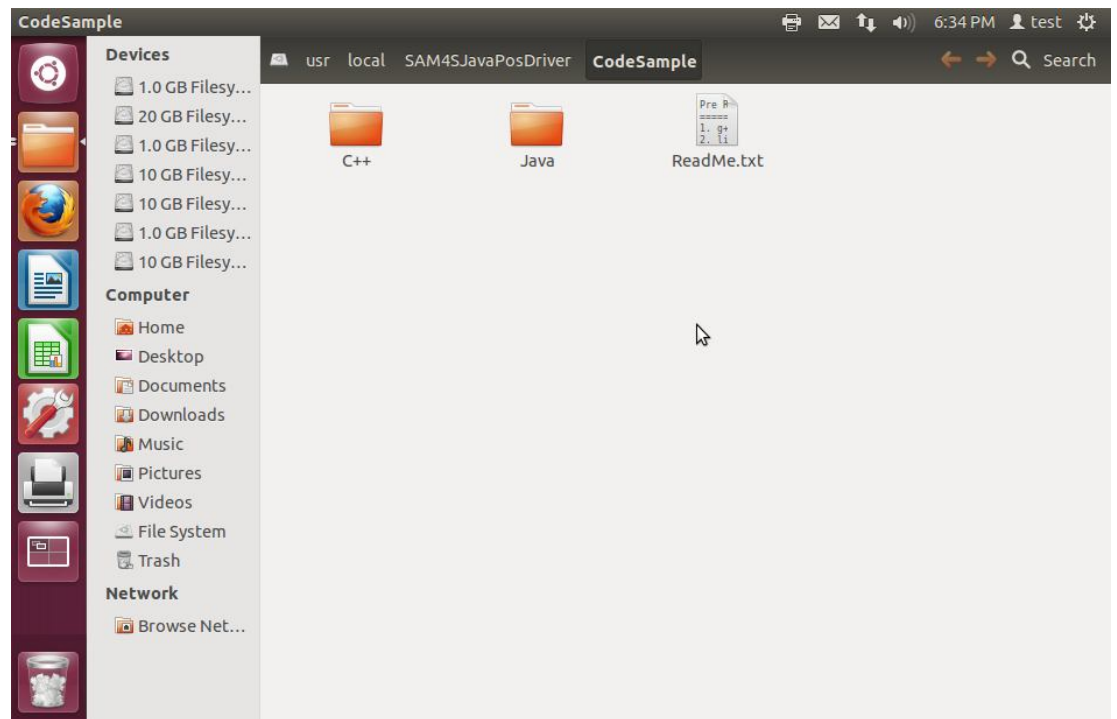
Sample application will demonstrate on how to program various receipt related functions such as composing text and images, aligning text and images, print, barcode, cash drawer open using JPOS driver.

Following are the steps to open SAM4S Receipt printer JPOS sample application code directory

- ⇒ Click on the **Ubuntu Wubi** [Marked as red in the image below] icon which is on the top right of the menu and type in **SAM4S** and click the “**SAM4S JavaPos Code Sample**” Link from the dashboard.



- ⇒ Code Sample directory will open as shown in the following screen



## 8. Uninstallation Procedure

Following are the steps to uninstall SAM4S Receipt printer JPOS driver from the Linux system

- ⇒ Click on the **Ubuntu Wubi** [Marked as red in the image below] icon which is on the top right of the menu and type in **Uninstall SAM4S JavaPOS Application** and click **Uninstall SAM4S JavaPos Application** Link from the dashboard.

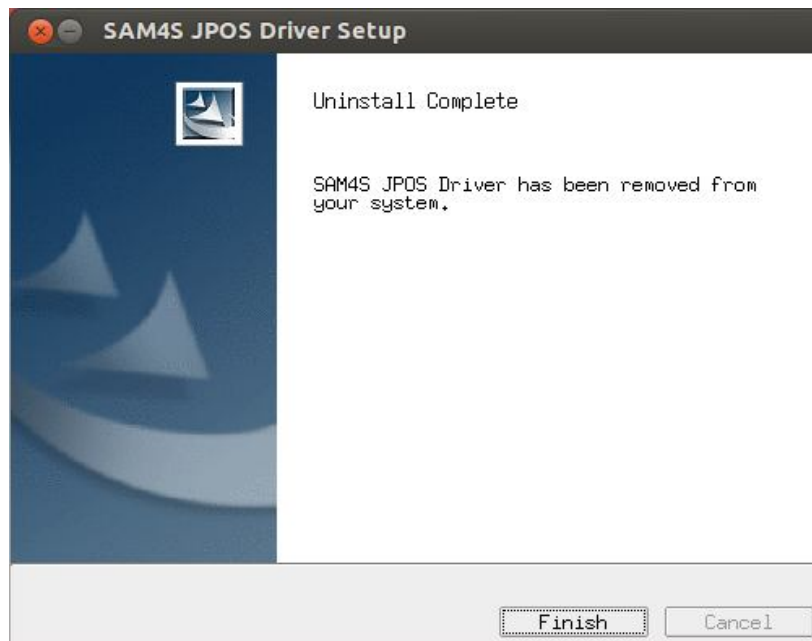


⇒ Type the root password when root access windows shown to open the Uninstall wizard.



⇒ Uninstall confirmation message will be shown as above, click **Yes** to uninstall the JPOS driver or click **No** to terminate the uninstallation.





⇒ The above screen will be shown on successful uninstallation of JPOS driver from the system.