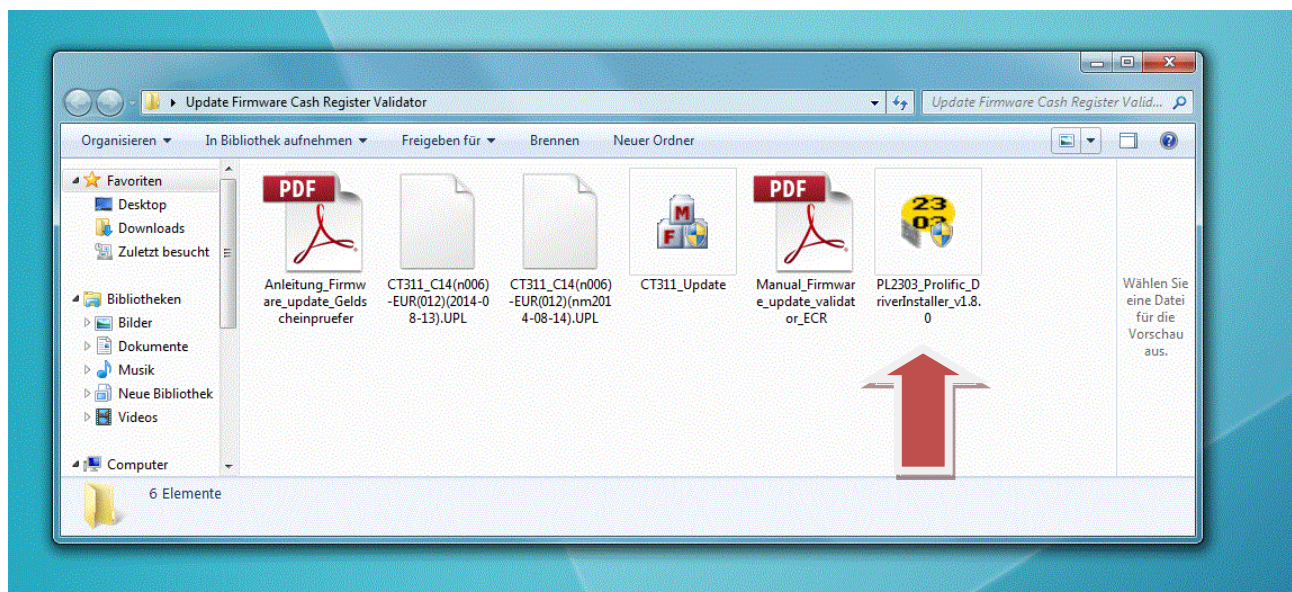


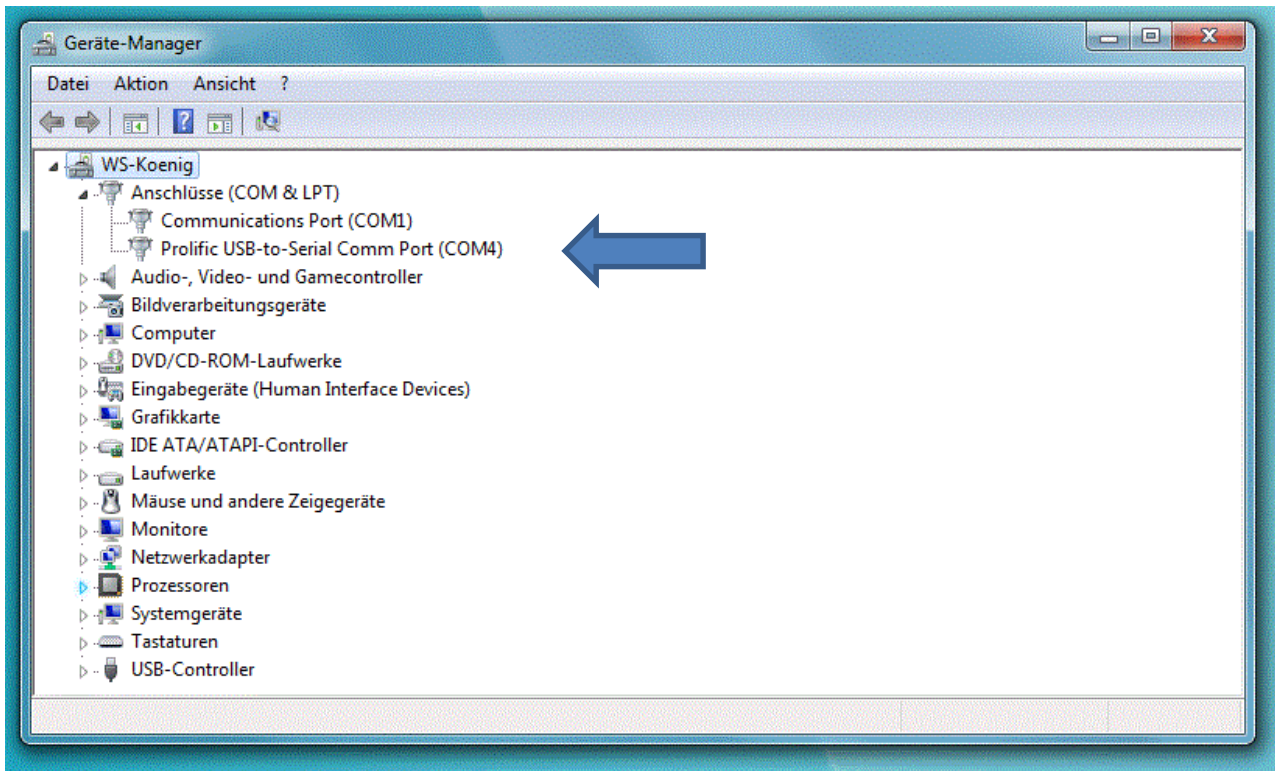
## Operating Instructions for Firmware Update for Bank Note Validators (integrated in Olympia cash registers)

- 1.) Files required (download from the Olympia homepage):  
PL2303\_Prolific\_DriverInstaller\_v180.exe (driver for the USB-to-USB cable)  
CT311\_Update (transfer programme for the firmware)  
CT311\_C14 (n006)-EUR(012)(2014-08-13).UPL or  
CT311\_C14 (n006)-EUR(012)(nm2014-08-14).UPL (firmware for the new Euro bank note). You also need a USB-to-mini-USB cable as used with a digital camera.
- 2.) Don't connect the USB cable. First start the PL2303\_Prolific\_DriverInstaller installation programme.



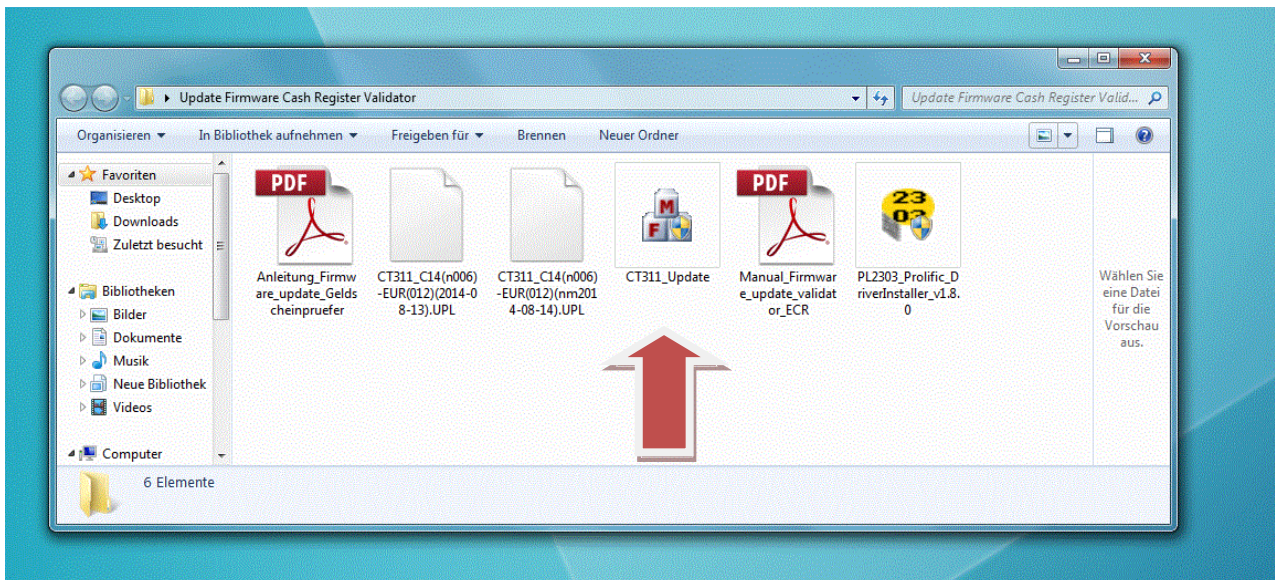
If necessary, select "Uninstall" in order to delete older PL2303 drivers. Then execute the PL2303\_Prolific\_DriverInstaller installation programme again. Confirm by clicking NEXT after which the programme installs the drivers you require. Conclude the process by clicking FINISH.

- 3.) Now connect the USB mini adapter to the bank note validator (remove the unit's housing cover, leaving the cash register switched off). The mini USB port is located at the right-hand edge of the bank note validator. Connect the USB port to the PC. The PC indicates that new hardware has been detected and that the driver is now being installed. The process is concluded when the "new hardware can be used") message appears.
- 4.) You can use the PC to open START, SETTINGS, CONTROL PANEL, SYSTEM, HARDWARE, DEVICE MANAGER and check that the COM connections are set to a port from 1 to 4.



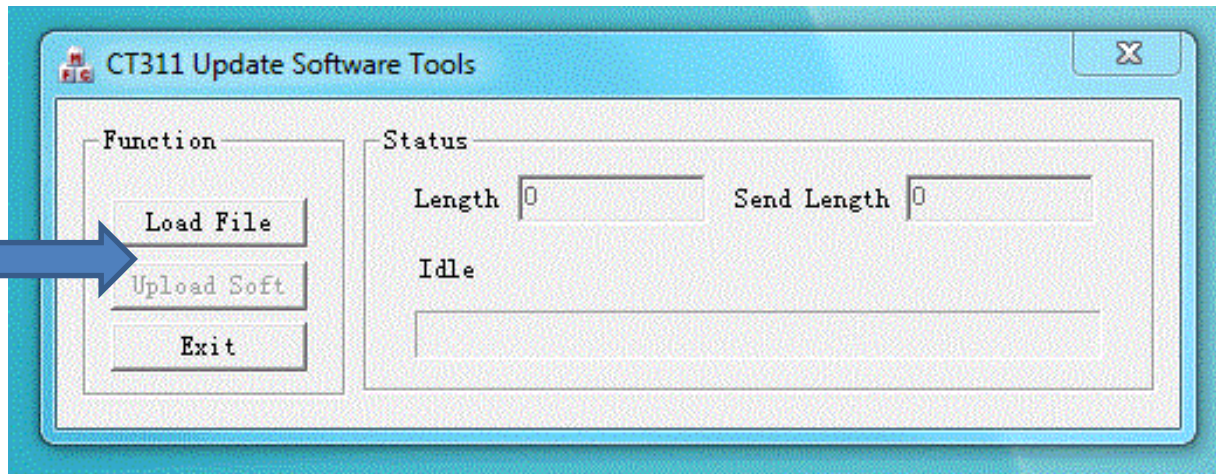
5.) Press and hold the button on the bank note validator (beside the USB port) while you switch the cash register on. When the LED on the bank note validator lights up red continuously, release the button again.

6.) Start the transfer programme for the firmware. It is called CT311\_Update.exe.

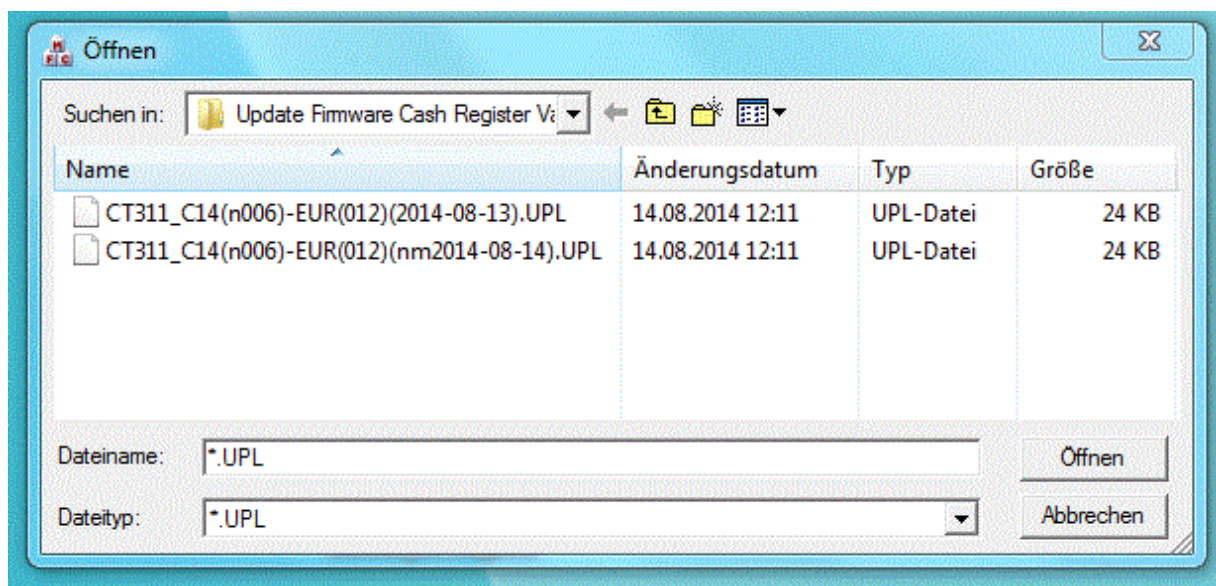


The programme CT311\_Update.exe starts with the following screen:





7.) Select LOAD FILE and search for the current firmware.

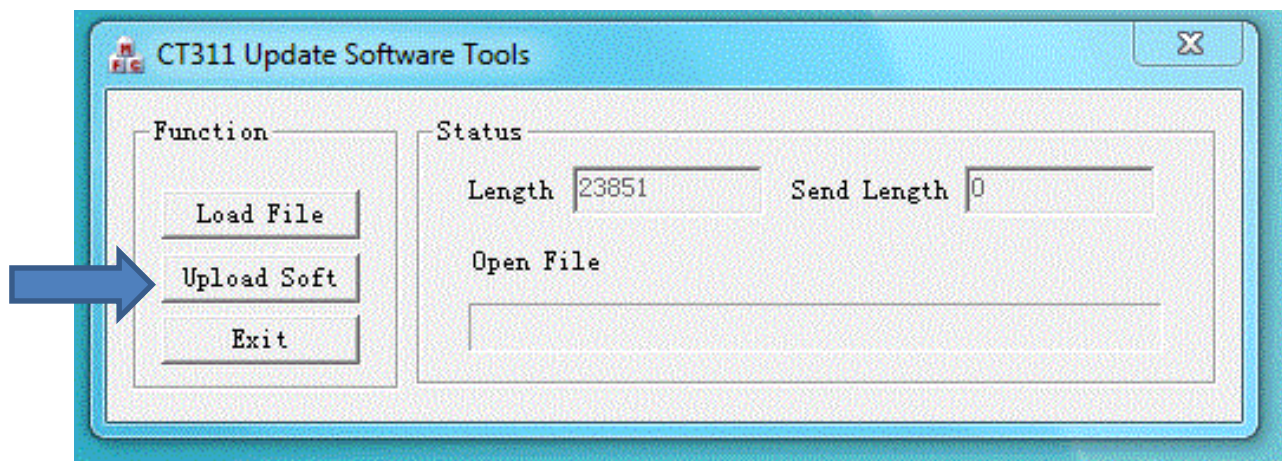


The firmware is dependent on the serial number of the bank note validator.

Ser. No. 10120001 – 10120500: CT311\_C14(n006)-EUR(012)(nm2014-08-14).UPL

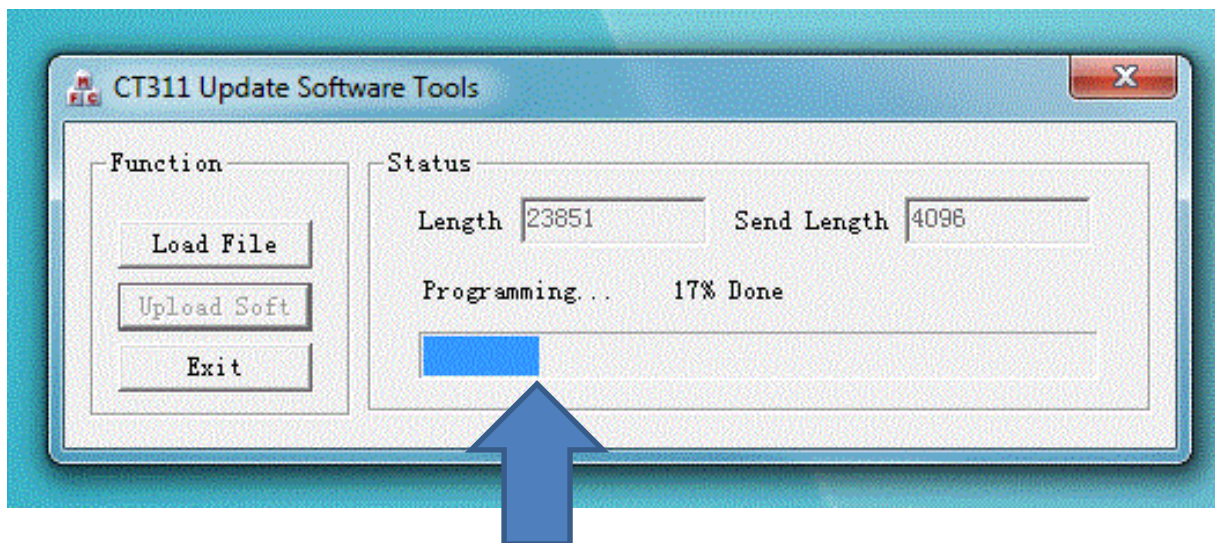
Ser. No. 12040001 – 12040500: CT311\_C14(n006)-EUR(012)(2014-08-13).UPL

Search for the file you require, select it and confirm by clicking ÖFFNEN (OPEN). The programme now displays a number (approx. 23,000) under "Length".

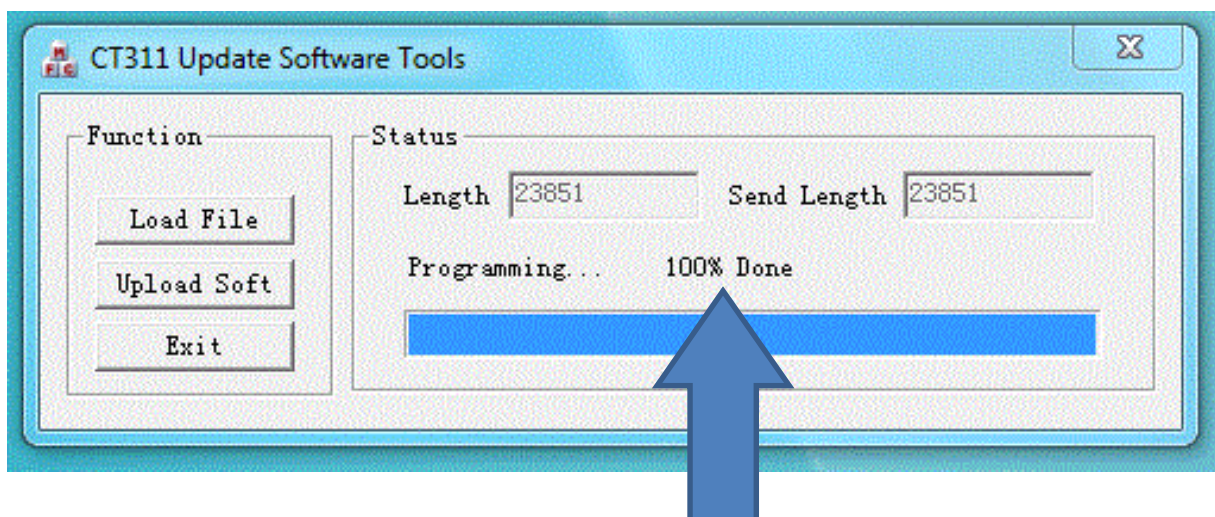




7.) The firmware can then be transferred. Begin by selecting UPLOAD SOFT.  
The blue loading bar indicates the progress of the data transfer.



After reaching 100%, the programme shows 100% Done. The transfer is finished.



The bank note validator automatically restarts and the LED lights up blue continuously.  
Programming of the device is now completed.

8.) Switch the cash register off, disconnect the USB cable and replace the housing cover  
back on the bank note validator. The device is now ready to use.