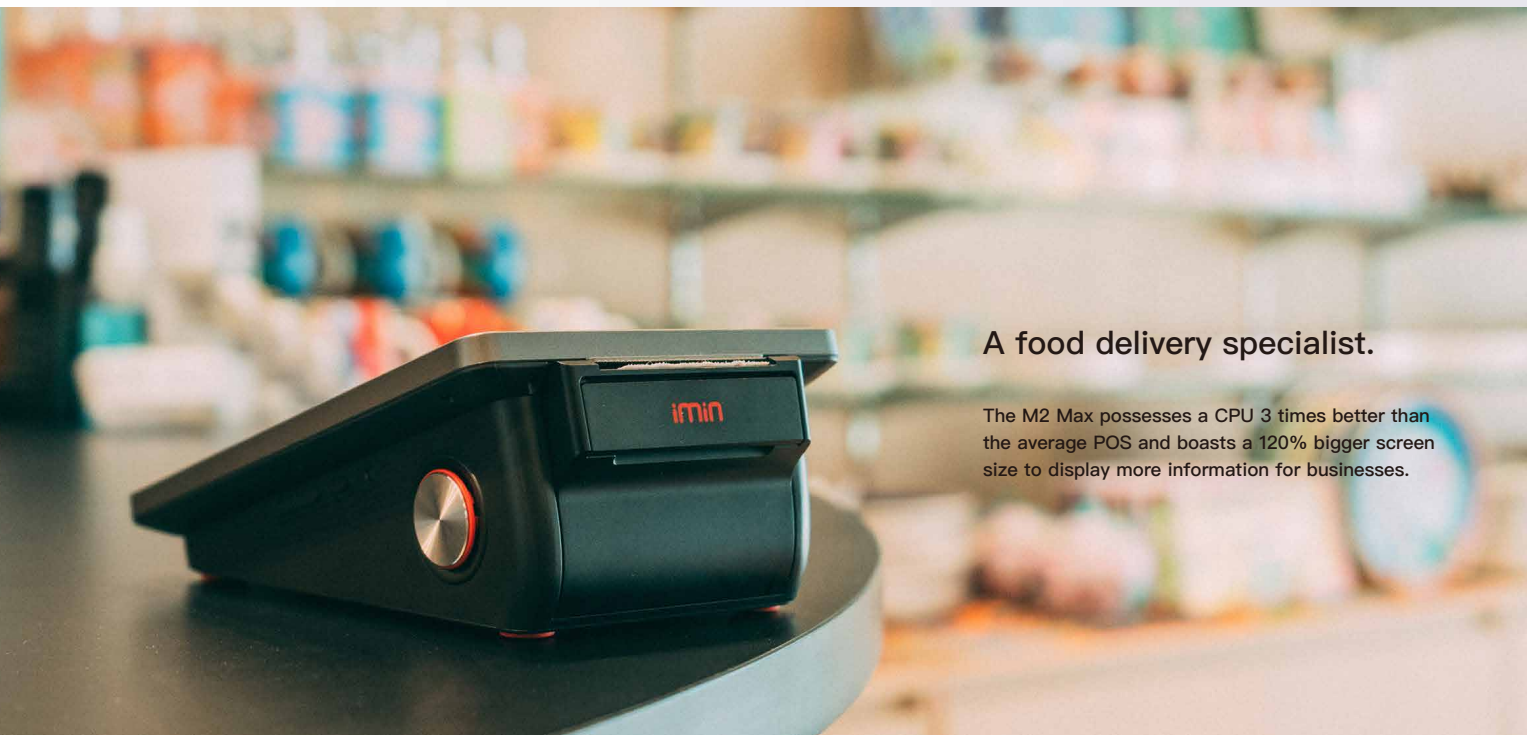
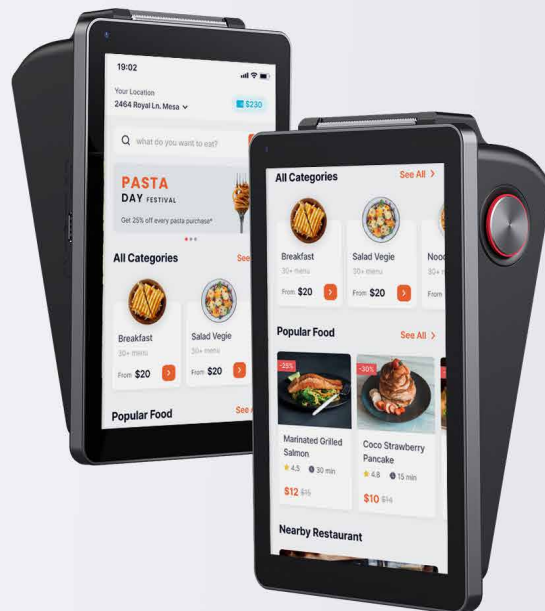




# iMin M2 Max

## Mobile POS

The M2 Max's large screen and high processing power helps businesses meet their fast-paced demands.

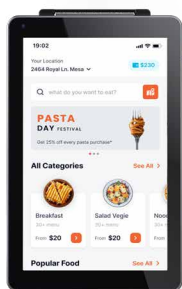


### A food delivery specialist.

The M2 Max possesses a CPU 3 times better than the average POS and boasts a 120% bigger screen size to display more information for businesses.

## Secure your next sale with iMin M2 Max.

Take things to the max with us.



### Display

8", 800 x 1280 touch screen maximises screen clarity for enhanced performance



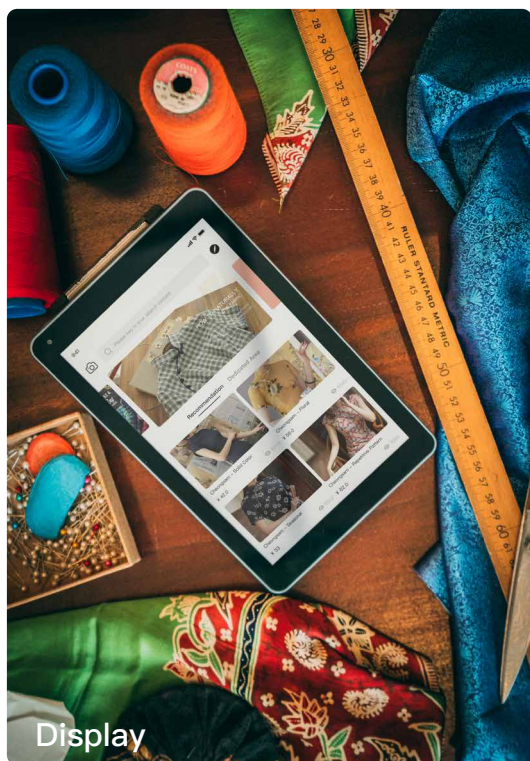
### Battery

2600mAh / 7.4v built-in battery powers up your business

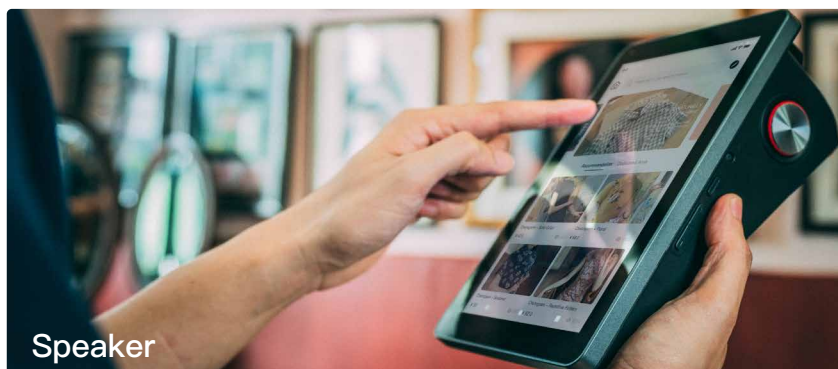


### Printer

Built-in 58mm Japan Seiko High Speed Printer means your customers never have to wait



Display



Speaker



Printer



Wall Hanging

## Specification

Processor	Octa-Core 1.8GHz, Dual*A75 and Hexa*A55 T610	Memory	2GB RAM+16GB ROM 4GB RAM+16GB ROM
Operating System	Android 11 series iMin UI	Display	8" 800 x 1280
Touch Panel	Multi-point Capacitive Touch Panel	Power	Input: 100-240V; Output: 5V 2A
Connectivity	Wi-Fi: 802.11 a/b/g/n/ac (2.4GHz/5GHz) Bluetooth 5.0+, GPS / GSM / 4G LTE NFC (On request)	Scanner	1D / 2D Code
Camera	Support scanning pay 0.3M FF	Battery	7.4V / 2600mAh
Button	Power key, Vol +/- Key, Reset key	Speaker	1.5W Mono
Printer	Fastest print speed up to 100mm/s, Supports paper rolls of 58mm, width & 40mm diameter	Peripheral Ports	USB Type-A x 1, Nano Sim x 1, TF Card x 1, USB Type-C x 1 (Support OTG)
TF Card	Up to 64G	Certification	FCC CE IMDA
Dimensions	212 x 132 x 76mm	Weight	598g

\*The product pictures and display contents in the above pages are for illustration purposes only. The actual product effects (including but not limited to appearance, color, size) and screen display contents (including but not limited to background UI pictures) might differ.

\*The performance results are obtained from iMin's internal laboratory and extracted from specific test environments. In actual use, there might be a difference in performance due to individual differences in product, software, use conditions and environmental factors.