

Virtual COM Driver Installation Guide

CT-S281/310/310II/2000/4000

CT-S601/651/801/851

CT-P29x

PPU-700II

PMU2xxxII&III(Not applicable to PMU2xxx type I)

CLP-521/531/621/631/8301 Series

CL-S400DT/521/621/631/700 Series

USB Interface Model

Dated April 19, 2012

CITIZEN SYSTEMS JAPAN CO., LTD.

6-1-12, Tanashi-cho, Nishi-Tokyo-shi

Tokyo 188-8511 JAPAN

Tel: +81-424-68-4993

Fax: +81-424-68-4997

A. Introduction

This document is to explain about the virtual COM port driver installation for following models.

CT-S281/310/310II/2000/4000/601/651/801/851/CT-P29x/PPU700II/PMU2xxxII/PMU2xxxIII/CLP-521/531/621/631/8300 Series & CL-S400DT/521/531/621/631/700 Series.

You may want to use Virtual COM if only USB port is available on the PC and your application software accepts only serial port. Please read this document carefully prior to the actual usage.

B. Condition

OS: Windows2000, XP, Vista, 7 (including 64bit) or Windows 2003 Sever

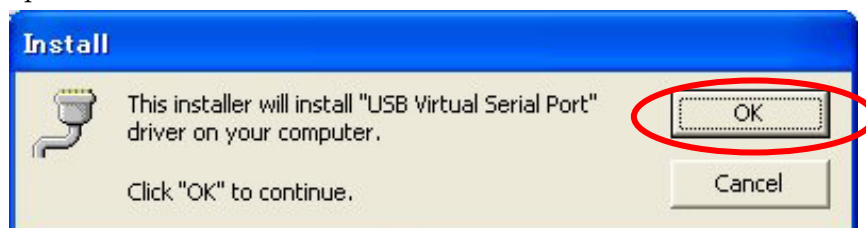
PC: USB port is available to connect to the printer.

Printer: CT-S281/310/310II/2000/4000/601/651/801/851/CT-P29x/PMU2xxxII/PPU-700II&III/
CLP-521/531/621/631/8300 Series & CL-S400DT/521/531/621/631/700 Series using USB port
USB port setting is V-COM.

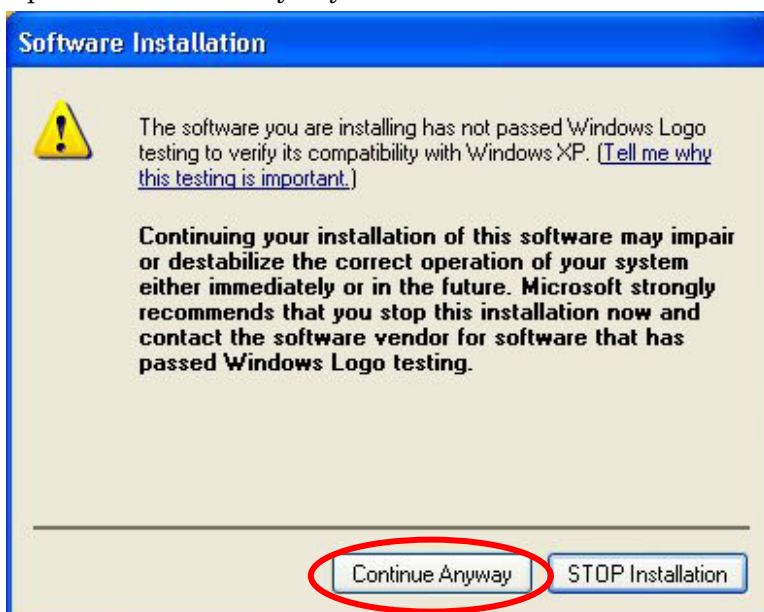
C. Installation steps

This explanation is based on Windows XP but the steps are almost same for other OS.

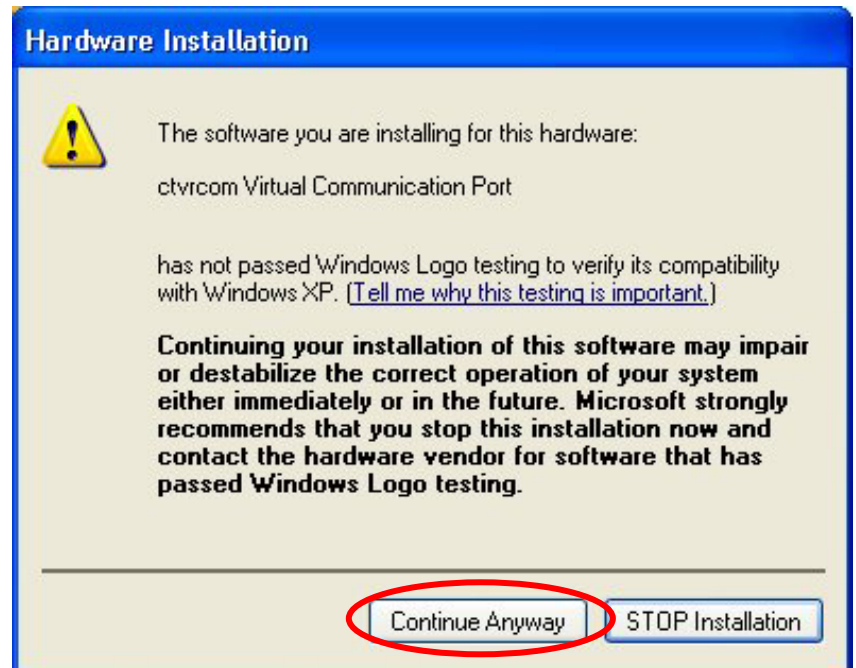
1. Please set the memory switch 5-3 USB mode for "V-COM" (No setting is necessary for CT-P29x)
2. Connect the PC and printer with USB cable while printer power is kept off.
3. Unzip the ZIP file (If you get the Virtual COM driver as ZIP file.)
4. Run "Setup" in the folder of driver files.
5. Following Windows shows up. Please press "OK".



6. "Software Install" window shows up. Please press "Continue Anyway".

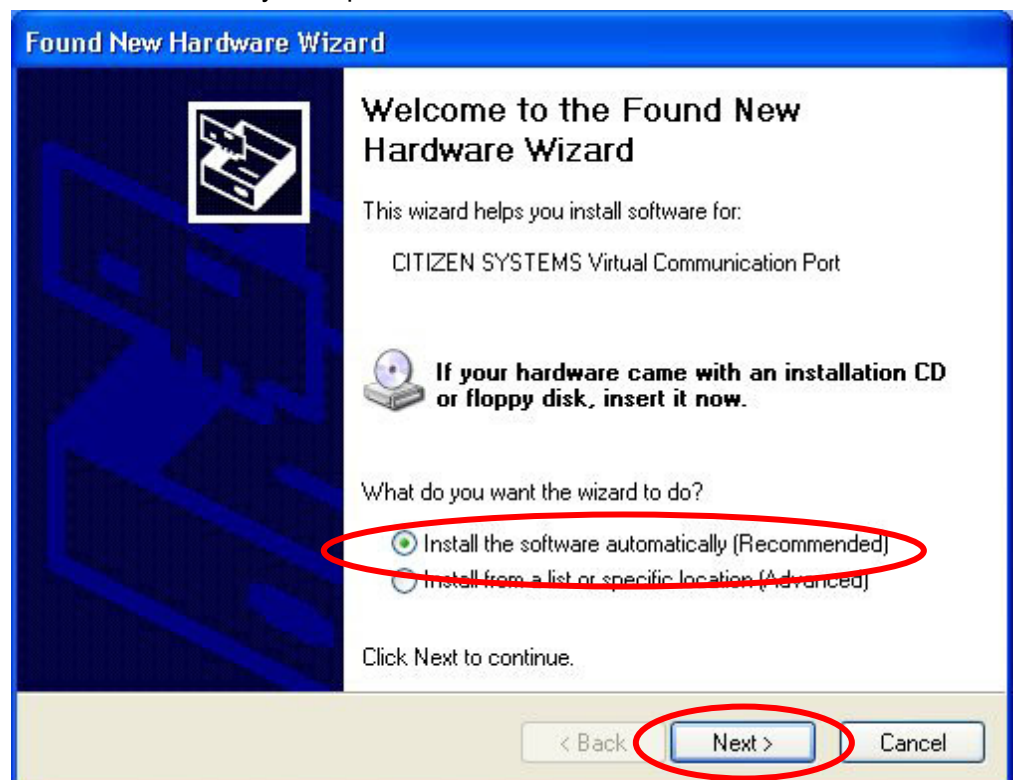


7. Then “Hardware Installation” window show up. Please press “Continue Anyway” and repeat this once more.



8. Turn the printer on. Then the Wizard below shows up.

Please choose “Install the software automatically” and press “Next”.



9. This window shows up. Please press "Continue".



10. Then driver installation is finished.

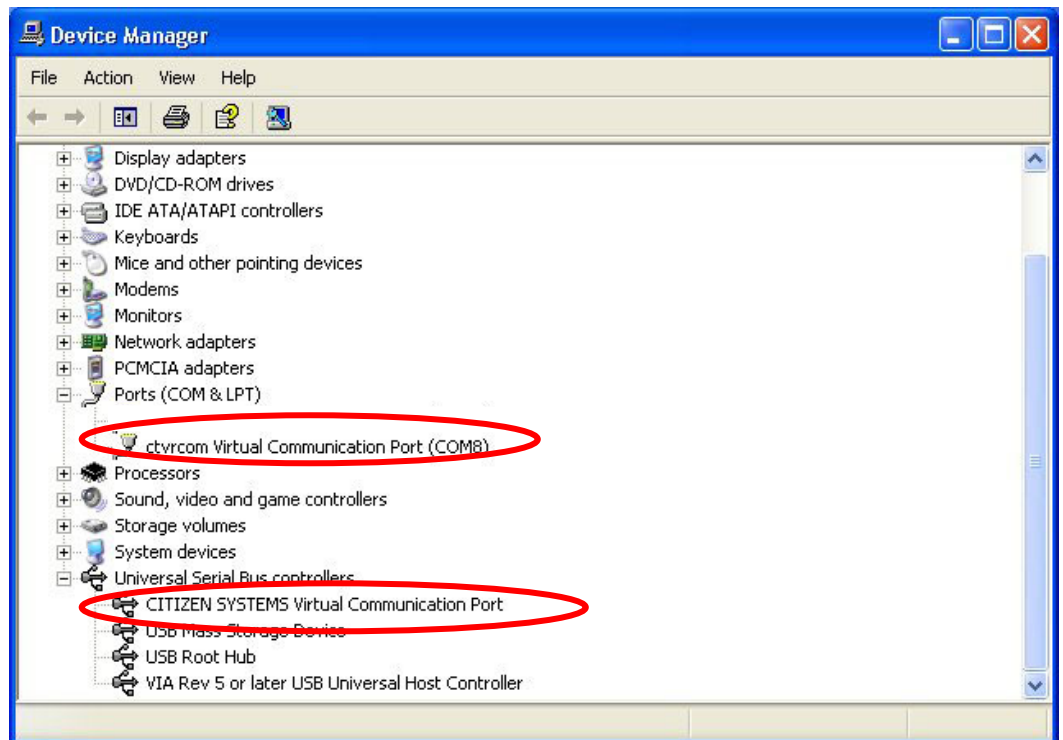
Please reboot the PC. (Recommended)



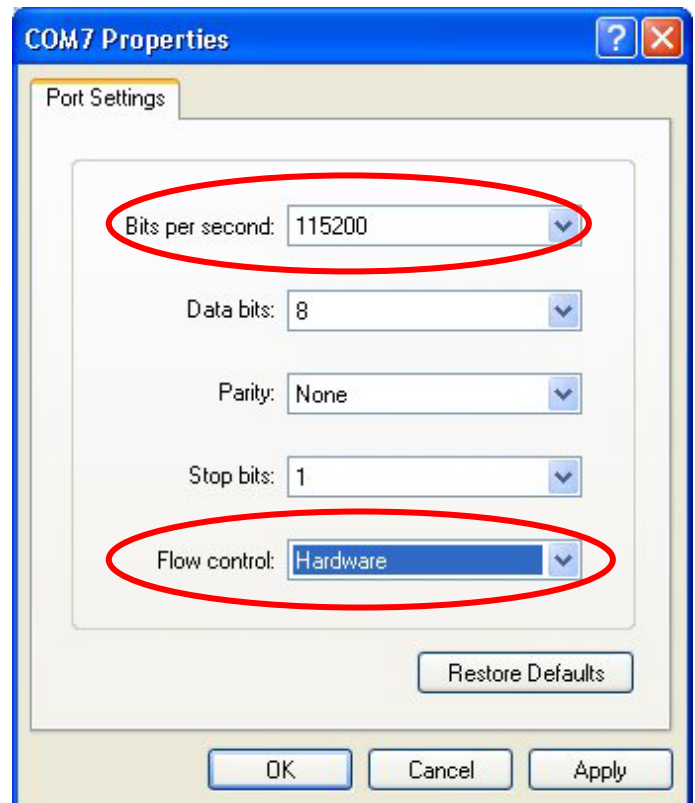
11. Then please check if the driver is installed correctly in the “Device Manager”.

A. 1 Port is added (Either COM7 or COM8)

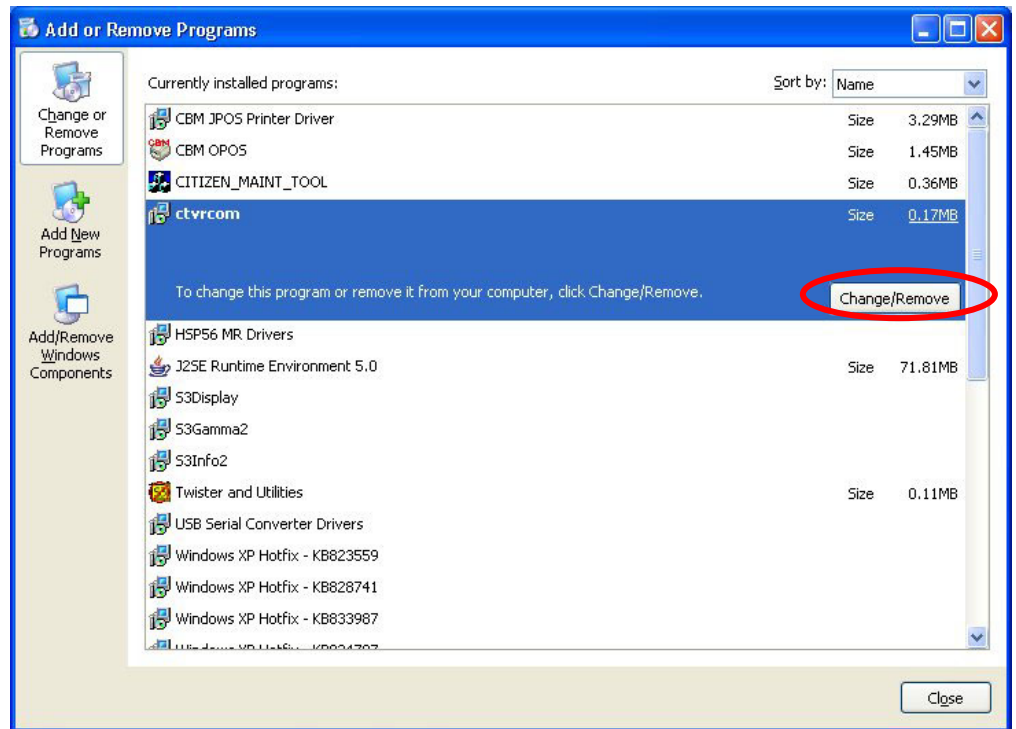
B. “CITIZEN SYSTEMS Virtual Communication Port” is added to USB Controller.



12. Please change the “Bits per second” to “115200” and “Flow control” of port setting to “Hardware”.
(Recommended)



13. To delete the driver, please choose “ctvrcom” in ”Add or Remove Programs” and press “Change/Remove”. Then Uninstall window shows up. Please follow the instruction.



Appendix

COM port assigned by the driver installer is fixed by the model (USB ID)

CT-S310/2000/4000/P29x (VID:2730, PID:0FFF) ----> COM8

Others (VID:1D90, PID:0FFF) ----> COM7

But depending on COM port situation of the PC, other port can be assigned.

If you want to assign other COM port, please contact us.