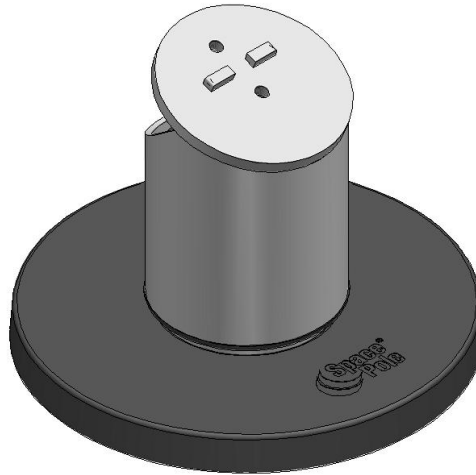


## Project Configuration Sheet – LNTP101-nn

### SP1 NonTilt™ with Low Profile Pole Mount Version 1.0



#### Parts List

Part No.	Description	Qty	Assemble	Box
1101-0040	40mm SpacePole with flange and 210° 7mm rotation slot	1		1
7502	NonTilting joint with anti wobble sleeve (P22116), M6/6mm hex screw (M9936-0606), and SpacePole sticker (MK15-0007)	1		1
P22505	Plastic flange cover	1		1

#### Fixings

	Description	Qty	Box
MK10-0001	10 x 5/8 self tapping screws	4	1
	4mm Allen Key	1	1

#### Install Instructions

MK15-0017

**Box** Box B012 with NonTilt™ in Box B010  
36 x B012 packed in Master Box B014

**Box Label** MK15-0021 – SP1 NonTilt™-nn – SP1 NonTilt™ Pole Mount  
MK15-0021 – LNTP101-nn – SP1 NonTilt™ with 40mm Pole – V 1.0  
MK15-0001 – 36 x LNTP101-nn – SP1 NonTilt™ with 40mm Pole V 1.0

**Security Seal** MK15-0002

Colour	<nn>	
	01	Light Grey
	02	Black
	03	Silver
	04	Pearl
	05	Iron Grey